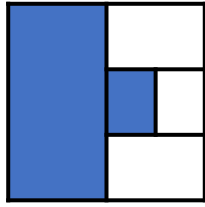
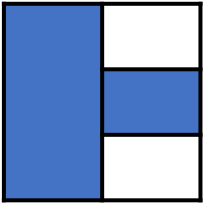


## Task A

### Part A

What fraction of each shape is blue?



### Part B

Circle the correct fraction to decimal conversions.

**Explain the mistakes.**

$$\frac{3}{4} = 0.34$$

$$\frac{4}{5} = 0.6$$

$$\frac{1}{5} = 0.2$$

$$\frac{6}{8} = 0.75$$

$$\frac{3}{10} = 0.3$$

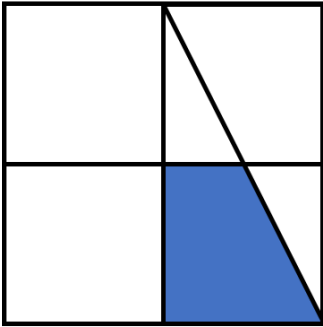
### Part C

Circle the fractions that are **more than 1 and less than 2**

$$\frac{8}{4} \quad \frac{15}{16} \quad \frac{19}{10} \quad \frac{7}{6} \quad \frac{6}{7}$$

## Task B

### Part A



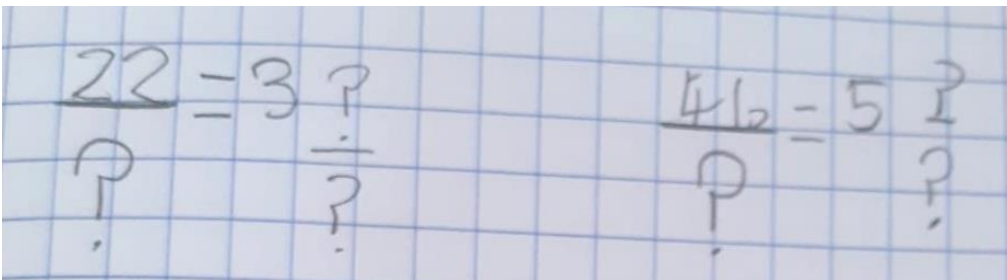
What fraction of the square is blue?

### Part B

How many fractions can be made that are more than 0.5 and less than 0.8 using the following numbers:

**4, 5, 6, 8, 10, 12**

### Part C



**Extension:** Find all possible answers.

## Answers, Task A

$$\frac{4}{6} \quad \frac{7}{12}$$

$\frac{3}{4}$ , mistake using the 3 and 4 in the decimal from the fraction.  $\frac{4}{5}$ , mistake is  $0.6 = \frac{3}{5}$

$$\frac{19}{10} \quad \frac{7}{6}$$

## Answers, Task B

$$\frac{3}{16}$$

$$\frac{4}{6} \quad \frac{5}{8} \quad \frac{6}{8} \quad \frac{6}{10} \quad \frac{8}{12}$$

$$\frac{22}{6} = 3\frac{4}{6} \quad \frac{22}{7} = 3\frac{1}{7} \quad \frac{46}{8} = 5\frac{6}{8} \quad \frac{46}{9} = 5\frac{1}{9}$$